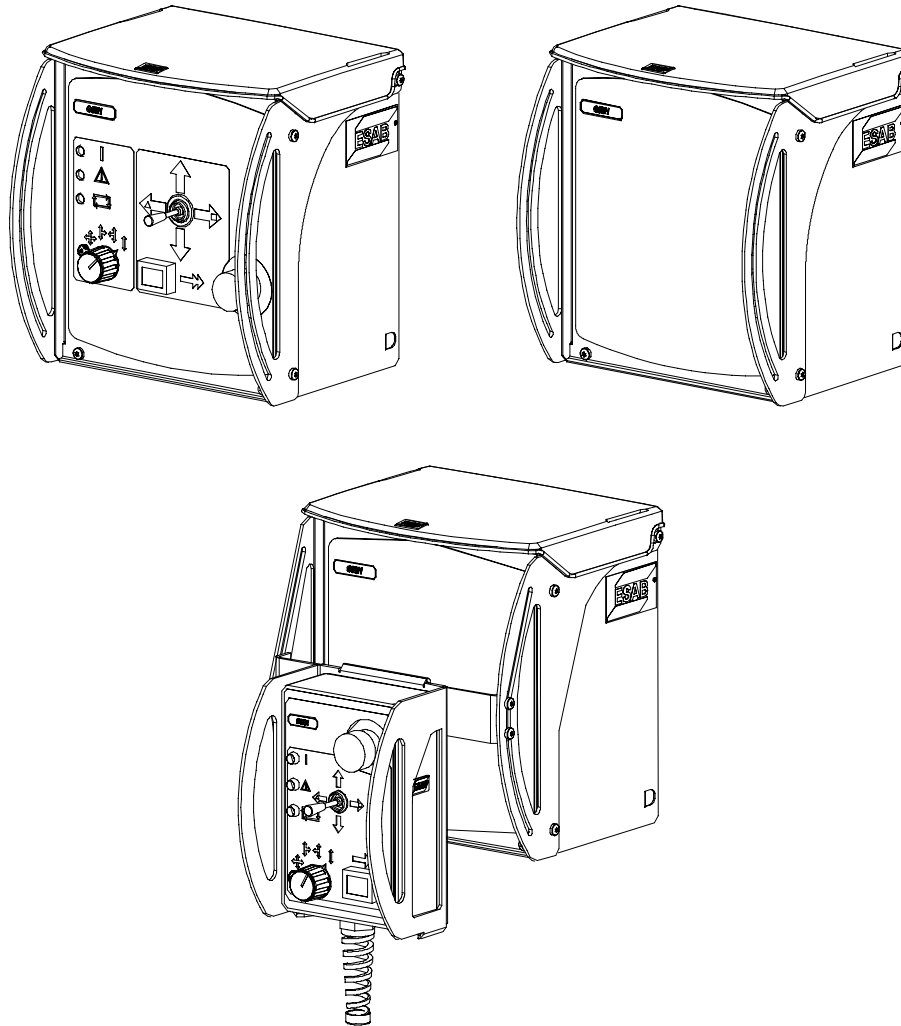


# GMH



**Bruksanvisning  
Brugsanvisning  
Bruksanvisning  
Käyttöohjeet  
Instruction manual  
Betriebsanweisung  
Manuel d'instructions  
Gebruiksaanwijzing  
Instrucciones de uso  
Istruzioni per l'uso**

**Manual de instruções  
Οδηγίες χρήσεως  
Instrukcja obsługi  
Kezelési utasítások  
Návod k používání  
Navod na pouitje  
Lietošanas pamācība  
Eksploataavimo instrukcijos  
Priručnik s uputama  
Manualul de instrucțiuni**

SVENSKA .....	5
DANSK .....	25
NORSK .....	45
SUOMI .....	65
ENGLISH .....	85
DEUTSCH .....	105
FRANÇAIS .....	125
NEDERLANDS .....	145
ESPAÑOL .....	165
ITALIANO .....	185
PORTUGUÊS .....	205
ΕΛΛΗΝΙΚΑ .....	225
POLSKI .....	245
MAGYAR .....	265
ČESKY .....	285
SLOVENSKY .....	305
LATVIEŠU .....	325
LIETUVIŪK .....	345
HRVATSKI .....	365
Rumanian .....	385

Rätt till ändring av specifikationer utan avisering förbehålles.  
Ret til ændring af specifikationer uden varsel forbeholdes.  
Rett til å endre spesifikasjoner uten varsel forbeholdes.  
Oikeudet muutoksiin pidätetään.  
Rights reserved to alter specifications without notice.  
Änderungen vorbehalten.  
Sous réserve de modifications sans avis préalable.  
Recht op wijzigingen zonder voorafgaande mededeling voorbehouden.  
Reservado el derecho de cambiar las especificaciones sin previo aviso.  
Ci riserviamo il diritto di variare le specifiche senza preavviso.  
Reservamo-nos o direito de alterar as especificações sem aviso prévio.  
Διατηρείται το δικαίωμα τροποποίησης προδιαγραφών χωρίς προειδοποίηση.  
Zastrzegamy sobie prawo do wprowadzenia zmian.  
Fenntartjuk az előzetes bejelentés nélküli változtatás jogát.  
Výrobce si vyhrazuje právo na změnu údajů bez předcházejícího upozornění.  
Výrobca si vyhradzuje právo na uskutočnenie zmien bez upovedomenia.  
Tiek paturētas tiesības bez iepriekšēja brīdinājuma izmainīt specifikācijas.  
Izmone pasilieka teise keisti specifikācijas be iespējimo.  
Rights reserved to alter specifications without notice.  
Rights reserved to alter specifications without notice.

Enheten är provad av ESAB i en allmän inkoppling.  
Ansvaret för den slutliga inkopplingens säkerhet och funktion åligger Intergratören.

---

Enheden er testet af ESAB i en generel forbindelse.  
Ansvaret for den endelige forbindelses sikkerhed og funktion påhviler integratoren.

---

Enheten er testet av ESAB i en generell tilkobling. Den som integrerer systemet, har ansvaret for sikkerheten og funksjonen ved den endelige tilkoblingen.

---

ESAB on koekäyttänyt yksikön yleisessä sähköliitännässä.  
Vastuu lopullisen kytkennän turvallisuudesta ja toimimisesta on integraattorilla.

---

The unit is tested by ESAB in a general purpose operation.  
Responsibility for the safety and function of the final operation remains with the Integrator.

---

Die Einheit wurde von ESAB in einer allgemeinen Schaltung geprüft.  
Die Verantwortung für die Sicherheit und Funktion der letztendlichen Schaltung liegt beim Integrator.

---

L'unité est testée par ESAB sur un raccordement général.  
L'Intégrateur est le seul responsable de la sécurité et du fonctionnement du raccordement définitif.

---

De eenheid werd door ESAB getest in een algemene schakeling.  
Diegene die de uiteindelijke schakeling uitvoert is aansprakelijk voor de veiligheid en werking ervan.

---

La unidad ha sido probada por ESAB en una conexión general.  
La seguridad y la funcionalidad de la conexión final son responsabilidad del Integrador.

---

L'unità è stata testata da ESAB in un impianto generico.  
La sicurezza e il funzionamento dell'impianto finale sono di responsabilità dell'installatore.

---

A unidade foi testada pela ESAB numa ligação de carácter geral.  
O integrador é responsável pela segurança da ligação final e pelo funcionamento.

---

Η μονάδα είναι δοκιμασμένη από την ESAB σε με κοινή σύνδεση.  
Η ευθύνη για την ασφάλεια και λειτουργία της τελικής σύνδεσης είναι του ολοκληρωτή.

---

Jednostka została przetestowana przez firmę ESAB dla ogólnej konfiguracji podłączenia.  
Za bezpieczeństwo i działanie końcowej konfiguracji podłączenia odpowiada Wykonawca.

---

Az egység az ESAB cégnél egy általános célú művelet során kipróbálásra került.  
A végső működés során a biztonságért és a működésért az integrátor felel.

---

Společnost ESAB jednotku testuje v obecném provozu.  
Odpovědnost za bezpečnost a funkčnost konečného provozu nese osoba, která provedla zabudování.

---

Jednotka je testovaná vo všeobecnej prevádzke spoločnosťou ESAB.  
Za bezpečnosť a funkčnosť konečnej prevádzky stále zodpovedá integrátor.

---

Iekārta ir ESAB pārbaudīta vispusīgas ekspluatācijas apstākļos.  
Par galaizmantošanas drošību un darbību atbildīgs ir integrators.

---

Įrenginio veikimas naudojant jį pagal benraįą paskirtį patikrintas ESAB.  
Už įrenginio galutinio veikimo saugą ir funkcijas atsako įrangos montuotojas.

---

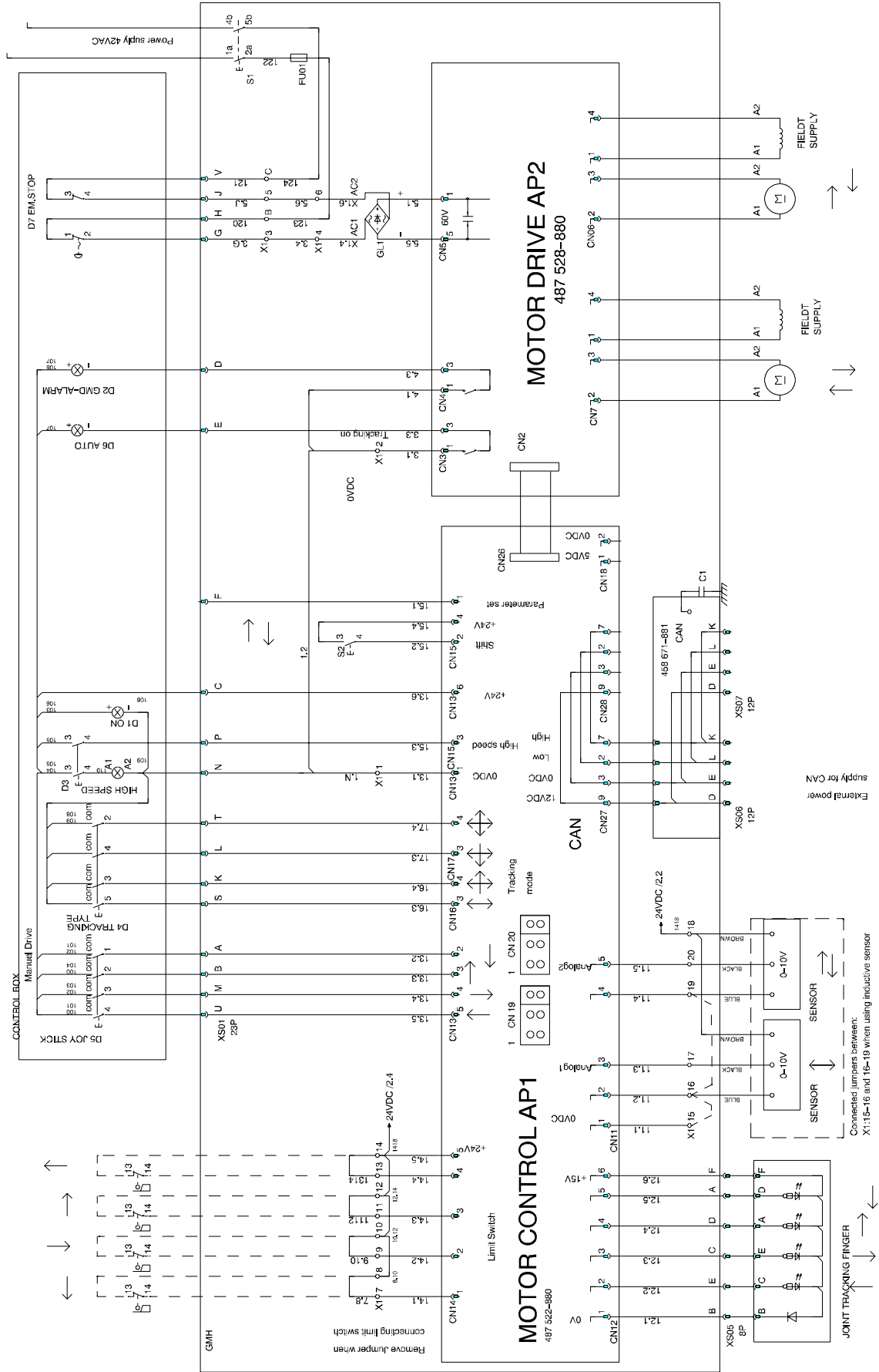
ESAB je testirao jedinicu u operaciji opće namjene.  
Odgovornost za sigurnost i funkciju završne operacije ostaje na Integratoru.

---

-----  
Unitatea este testată de ESAB în timpul funcționării în scop general.  
Responsabilitatea pentru siguranță și funcționarea finală este a Integratorului.  
-----

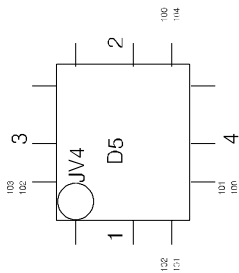
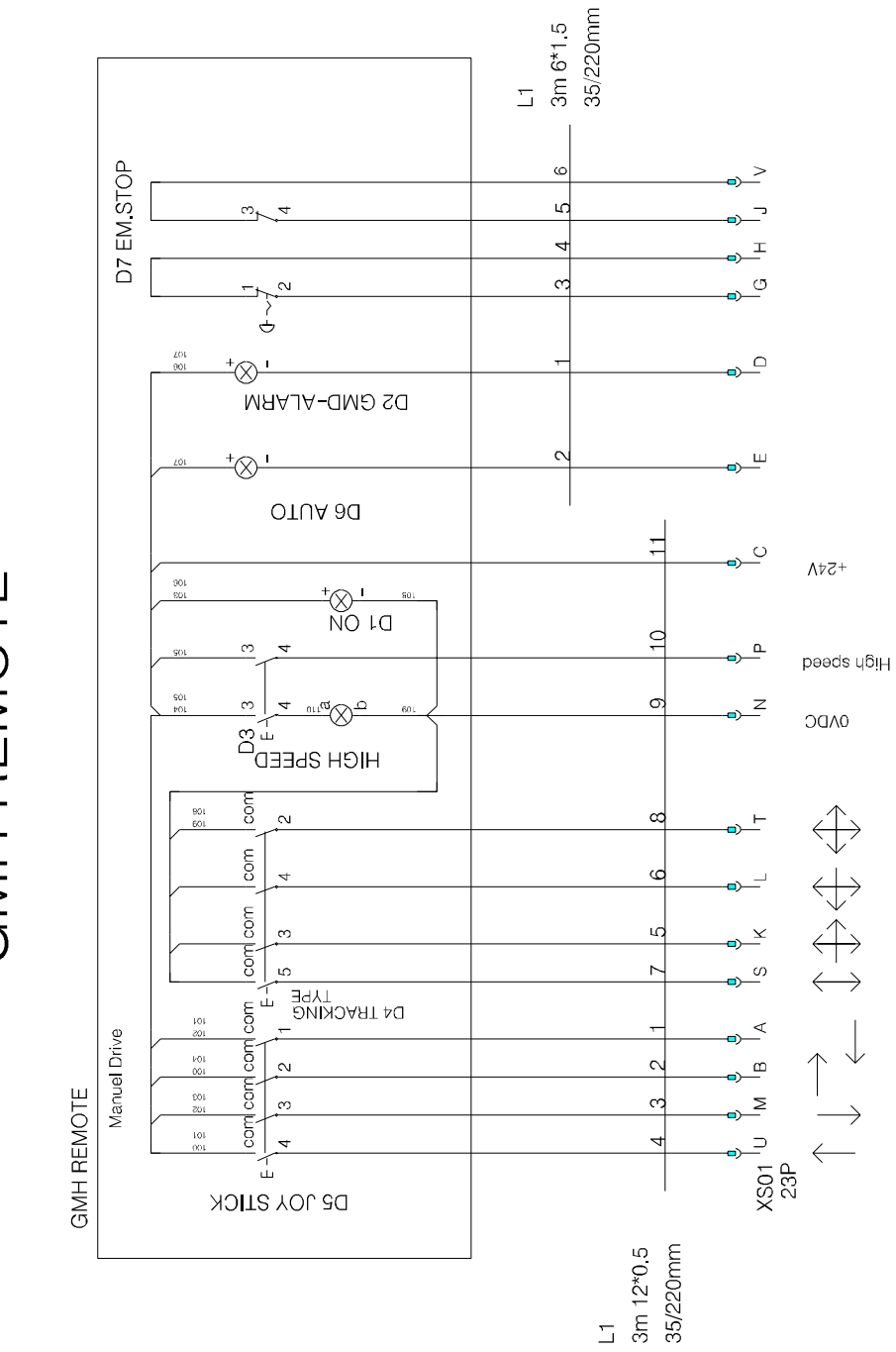
# GMH with portable control box

## GMH

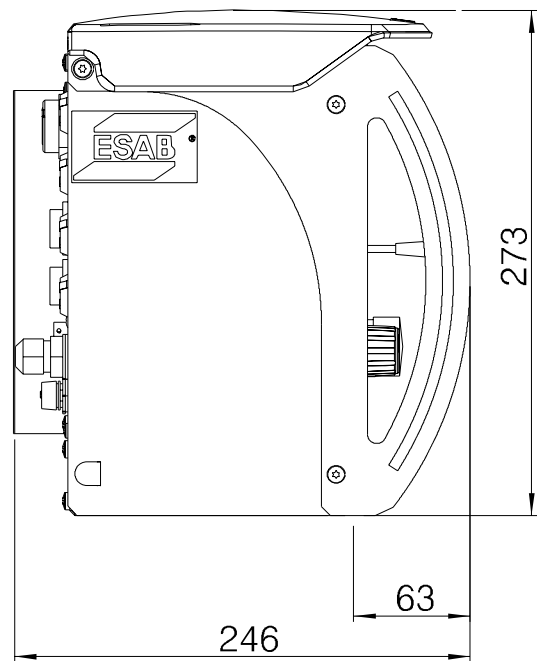
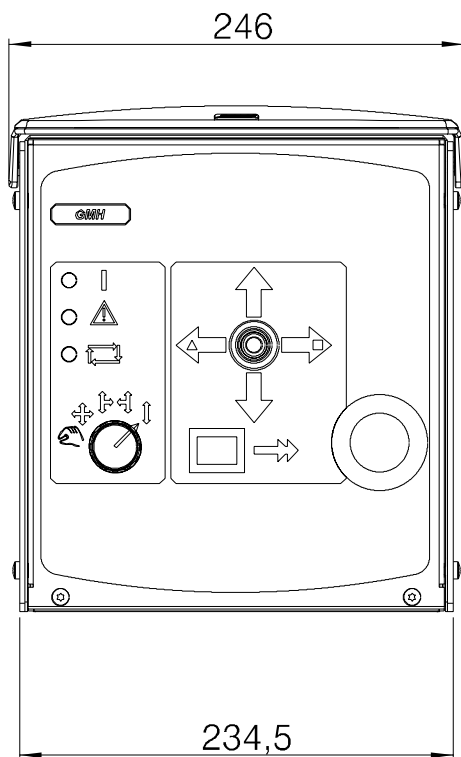
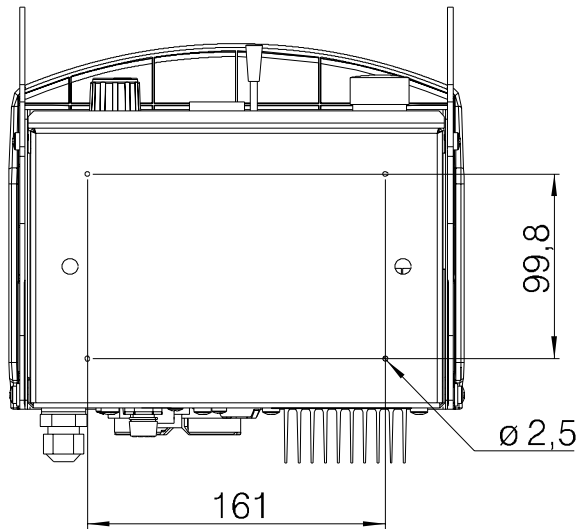


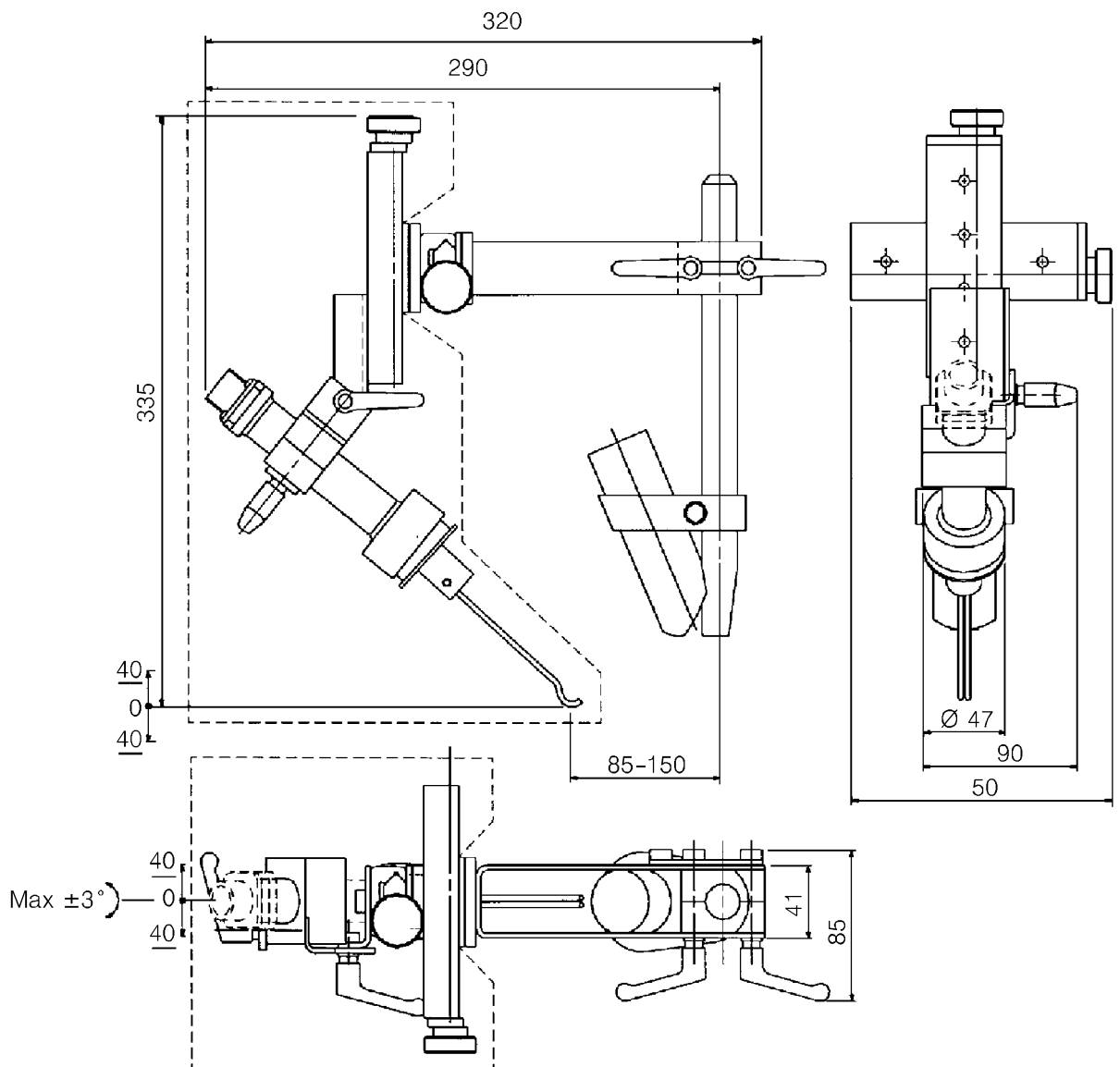
**GMH, Portable control box**

# GMH REMOTE

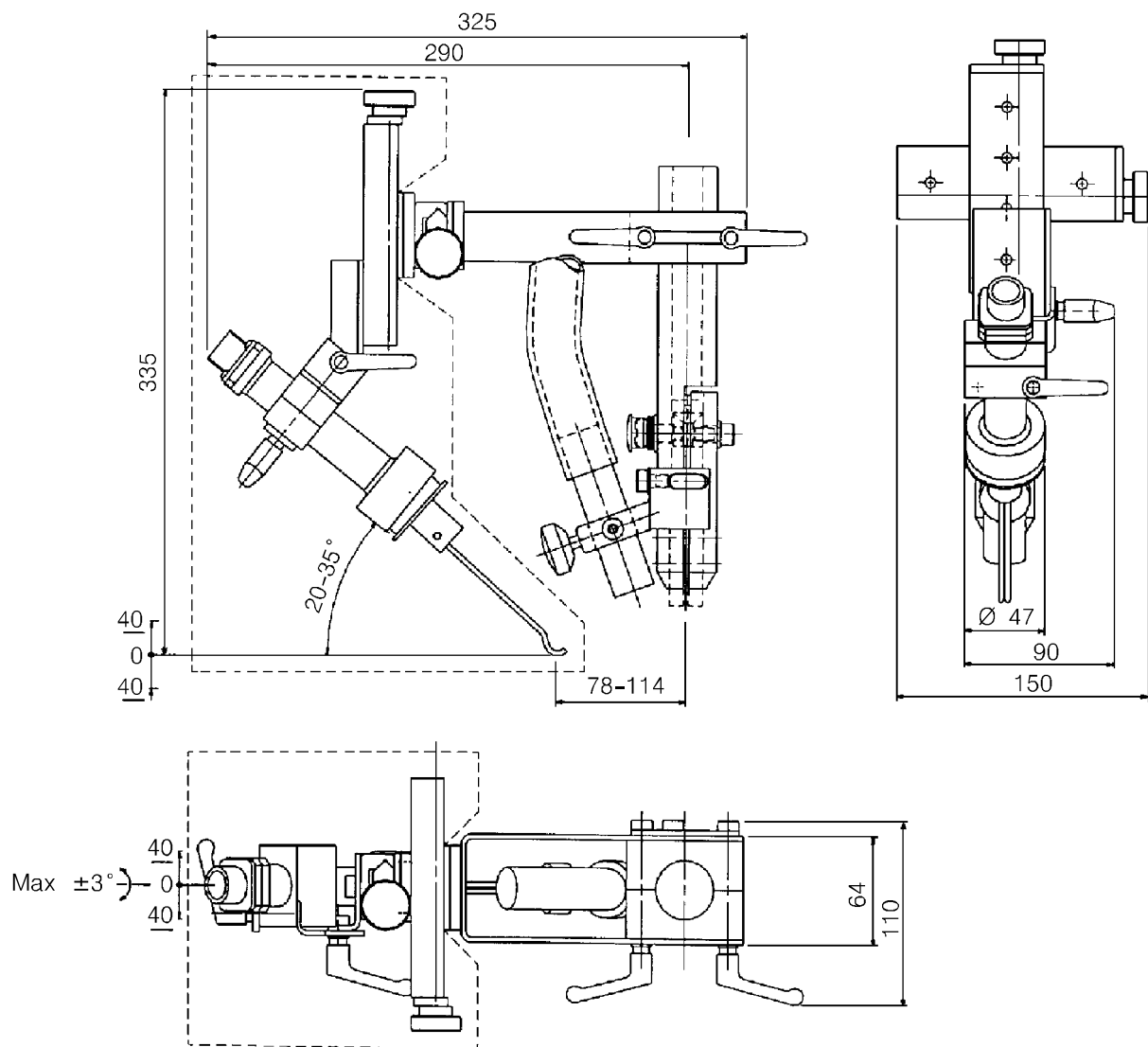


**MÅTTSKISS MÅLSKITSE MÅLSKISSE MITTAPIIRUSTUS DIMENSION  
 DRAWING MASSBILD COTES D'ENCOMBREMENT MAATSCHETS CRO-  
 QUIS ACOTADO DIMENSIONI ESBOÇO COM DIMENSÕES  
 ΣΧΕΔΙΑΡΑΜΜΑ ΜΕΓΕΘΩΝ RYSUNEK WYMIAROWANYMÉRETEZETT RAJZ  
 ROZMĚROVÝ VÝKRES ROZMEROVÝ VÝKRES REZERVES DAĻU SARAKSTS  
 MATMENŪ BRĒŽINYS KOTIRANE NACRTE DESEN DIMENSIONAL**







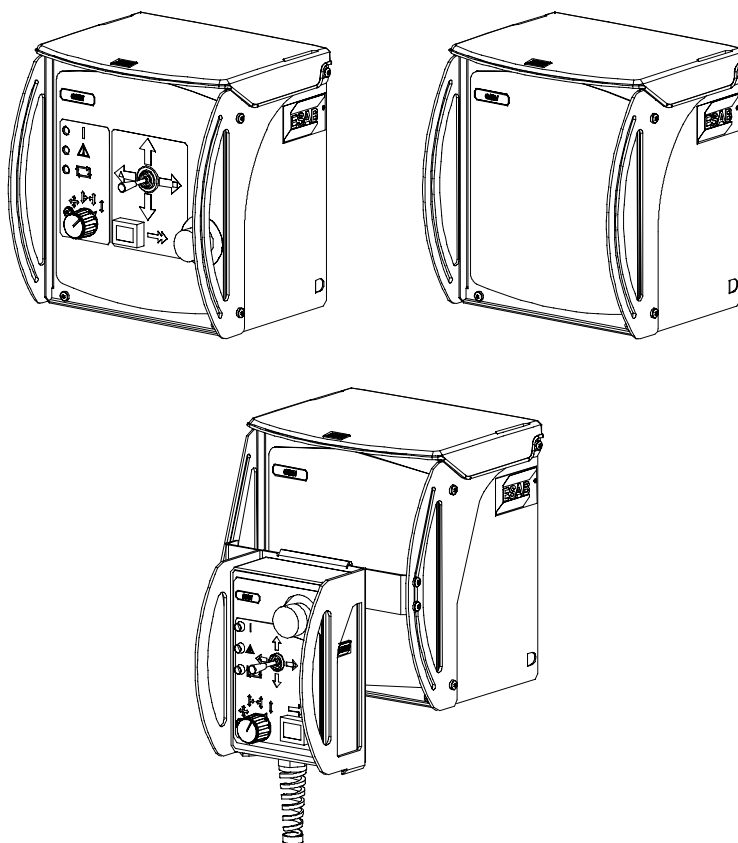




RESERVDLSFÖRTECKNING RESERVDLSFORTEGNELSE  
 RESERVDLSLISTE VARAOSALUETTELO SPARE PARTS LIST ERSATZ-  
 TEILLISTE LISTE DE PIÈCES DÉTACHÉES RESERVEONDERDELENLIJST  
 LISTA DE REPUESTOS ELENCO RICAMBI LISTA DE PEÇAS SOBRESSALEN-  
 TES ΠΙΝΑΚΑΣ ΑΝΤΑΛΛΑΚΤΙΚΩΝ ΜΕΡΩΝ SPIS CZĘŚCI ZAPASOWYCH  
 TARTALÉKALKATRÉSZLISTA SEZNAM NÁHRADNÍCH DÍLŮ ZOZNAM  
 NÁHRADNÝCH DIELOV REZERVES DAĽU SARAĽTS ATSARGINIŲ DALIŲ  
 SAŖAŠAS POPIS PRIÉUVNIH LISTA DE PIESE DE SCHIMB

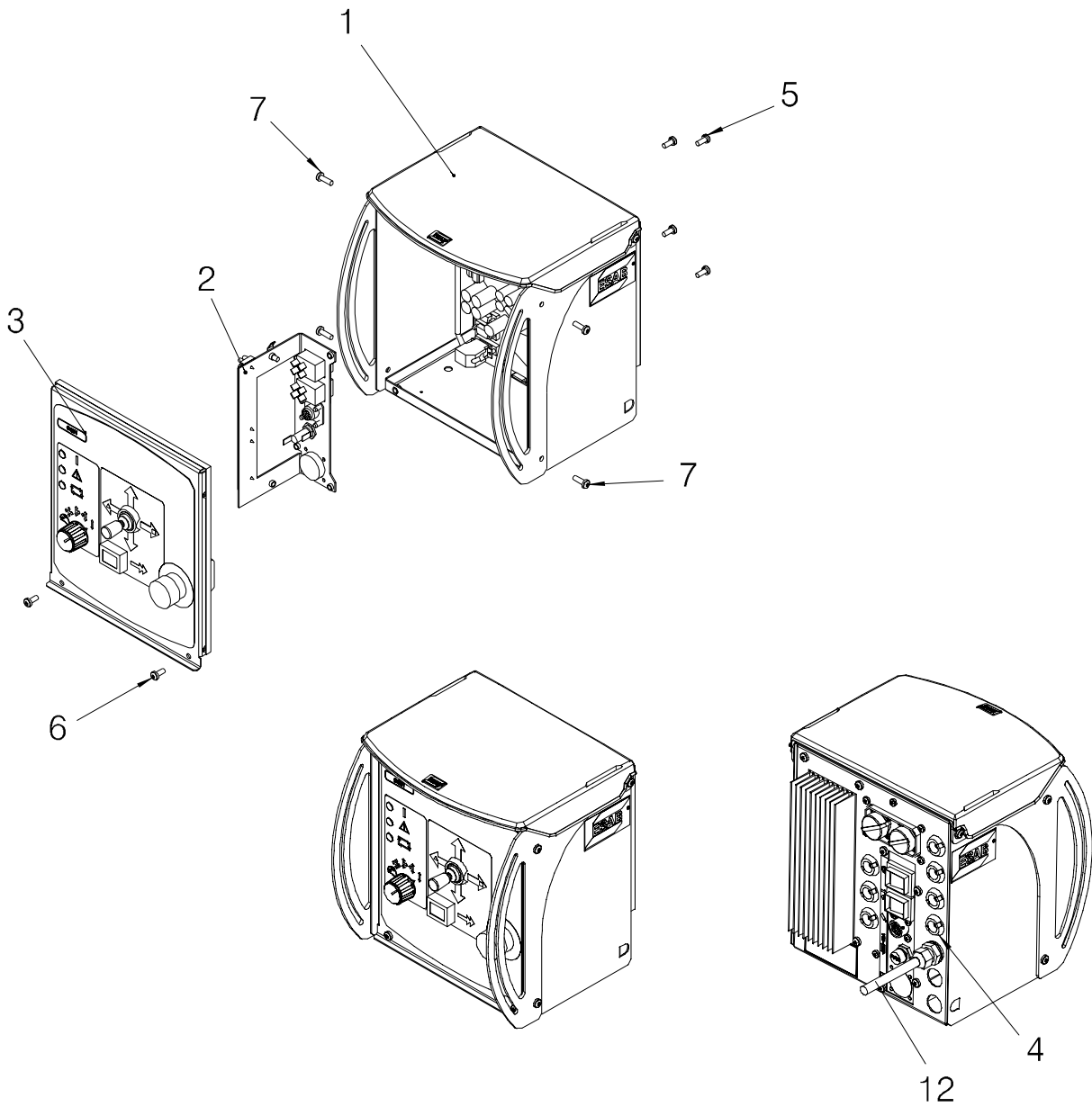
**GMH**

Edition 2008-11-03

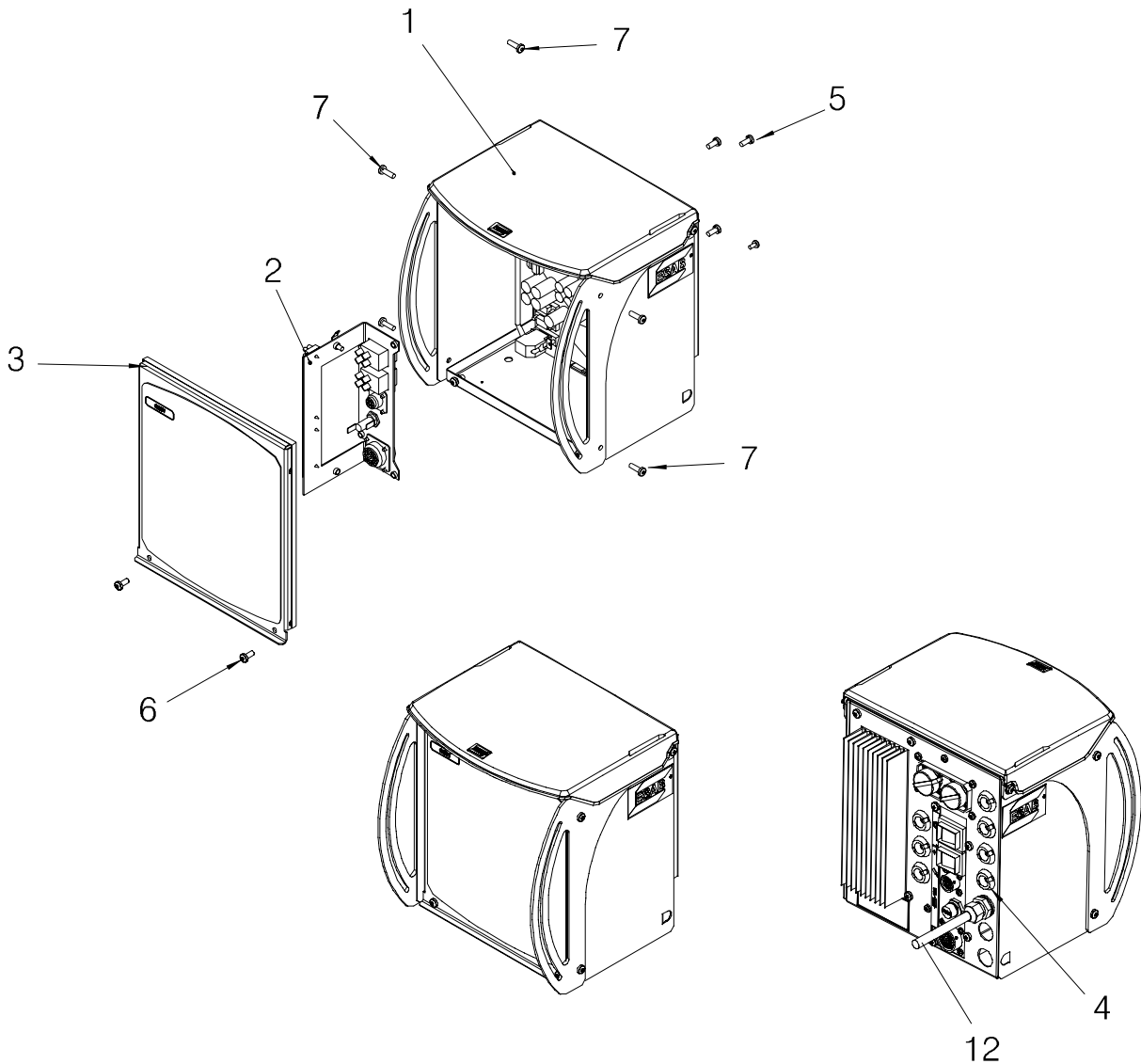


Ordering no.	Denomination	Notes
0460503880	GMH Complete	Joint tracking unit without control panel
0460503881	GMH with MMC Complete	Joint tracking unit with control panel
0460698880	GMH with portable control box	Joint tracking unit without control panel and with portable control box
0460570880	Portable control box	
0416688880	Sensor	
0416739880	Slide cross for sensor	

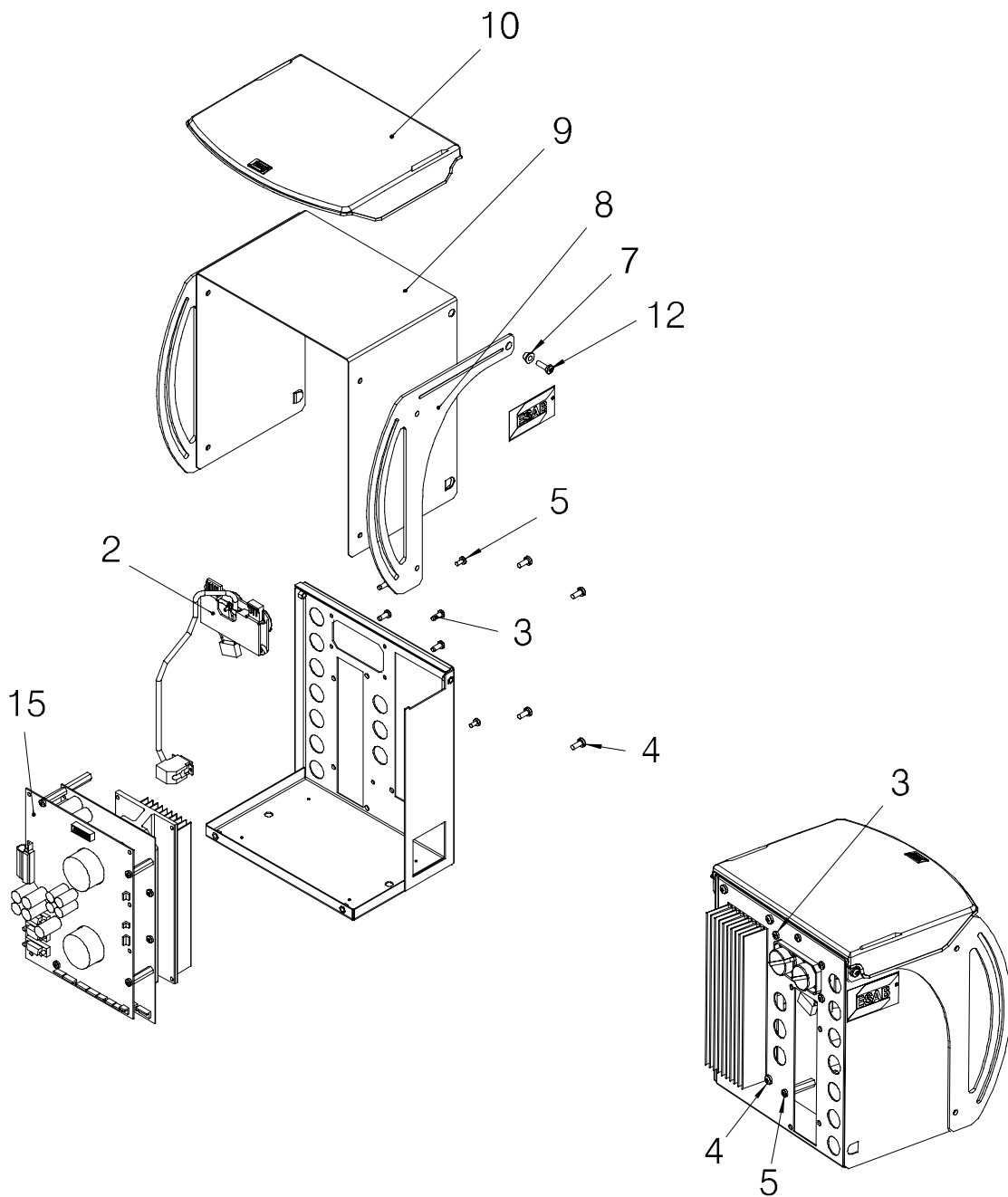
Item no.	Qty	Ordering no.	Denomination	Notes
		<b>0460503880</b>	<b>GMH</b>	<b>Without control panel</b>
1	1	0460468880	Basic module	
2	1	0460470882	Outlet module, GMH portable control	
3	1	0460462880	MMC without controls	
4	7	0194292020	Grommet	Ø20
5	4		Screw MRT, ground-cutter (black)	M5x12
6	2		Screw MRT (black)	M5x16
7	4		Screw MRT (black)	M5x16
12	1	0460673880	Supply cable	L = 5m



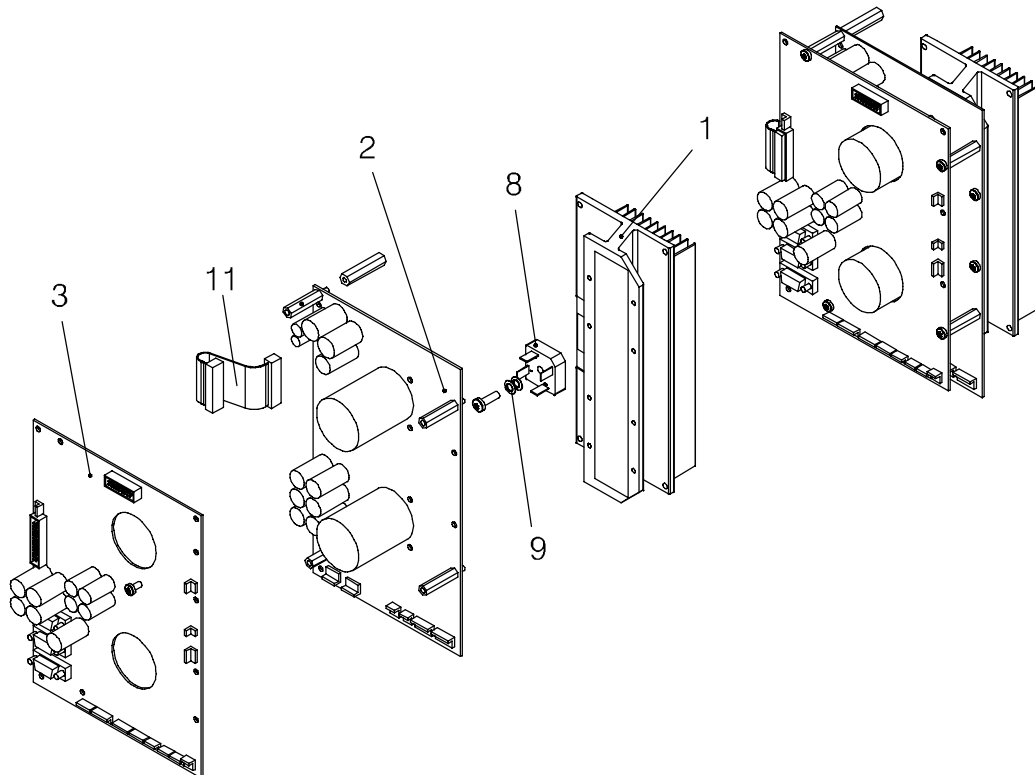
Item no.	Qty	Ordering no.	Denomination	Notes
		<b>0460503881</b>	<b>GMH with MMC</b>	<b>With control panel</b>
1	1	0460468880	Basic module	
2	1	0460470883	Outlet module, GMH MMC	
3	1	0460462882	MMC GMH	
4	7	0194292020	Grommet	Ø20
5	4		Screw MRT, ground-cutter (black)	M5x12
6	2		Screw MRT (black)	M5x16
7	4		Screw MRT (black)	M5x16
12	1	0460673880	Supply cable	L = 5m



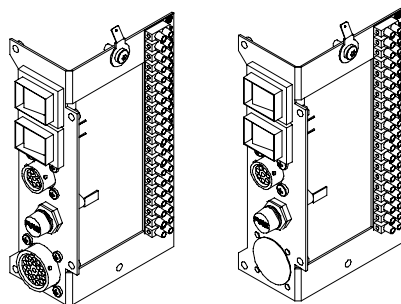
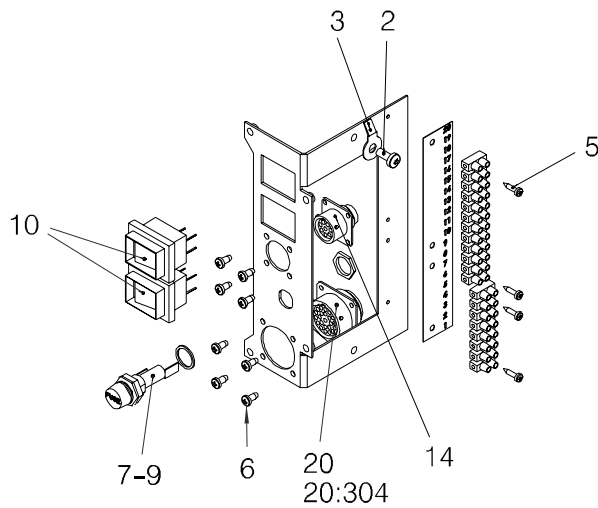
Item no.	Qty	Ordering no.	Denomination	Notes
		<b>0460468880</b>	<b>Basic module</b>	
2	1	0458679885	Operating contact can tractor	
3	4		Screw RX-PT	6-19x8
4	6		Screw MRT ground-cutter	M5x12
5	8		Screw MRT	M4x8, DIN 7985
7	2	0460465001	Spacer for hinge	
8	2	0460463001	Protective frame	
9	1	0460430001	Cover	
10	1	0460469001	Sun visor	
12	2		Screw MRT (black)	M5x16
15	1		Circuit board module	



Item no.	Qty	Ordering no.	Denomination	Notes
			<b>Circuit board module</b>	
1	1	0460461001	Heat sink	GMH GMH with inductive sensor
2	1	0487528880	PC board, motor drive	
3	1	0487522981 0487522982	PC board, motor control PC board, motor control	
8	1	0460648880	Cable set with rectifier bridge	
9	2		Spring washer	
11	1	0193700703	Ribbon cable+connectors	26-pole

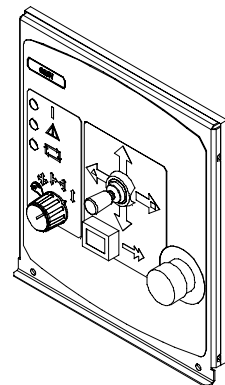
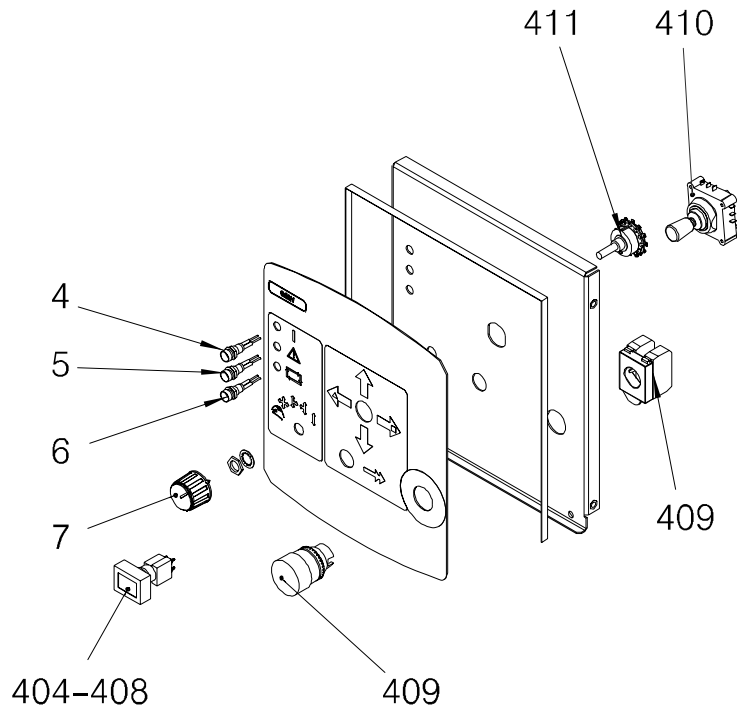


Item no.	Qty	Ordering no.	Denomination	Notes
		<b>0460470882</b>	<b>Outlet module, GMH portable control box</b>	<b>GMH</b>
2	1		Screw MRT ground-cutter	M5x12
3	1		Flat pin	6,3x0,8 M6
5	4		Screw RTS	st2,9x13
6	4		Screw RX-PT	6-19x8
7	1	0193701001	Fuse holder	fine.5x12
8	1	0193701002	Fuse holder	5x20
9	1	0567900116	Fuse	10 A (Slow)
10	2	0193317001	Switch	
14	1	0460650880	Cable set with connector for joint sensor	
20	1		Cable set, GMH without MMC	
20:304	1		Sleeve socket, Burndy	23 pole
		<b>0460470883</b>	<b>Outlet module, GMH MMC</b>	<b>GMH</b>
2	1		Screw MRT ground-cutter	M5x12
3	1		Flat pin	6,3x0,8 M6
5	4		Screw RTS	st2,9x13
6	4		Screw RX-PT	6-19x8
7	1	0193701001	Fuse holder	fine.5x12
8	1	0193701002	Fuse holder	5x20
9	1	0567900116	Fuse	10 A (Slow)
10	2	0193317001	Switch	
14	1	0460650880	Cable set with connector for joint sensor	

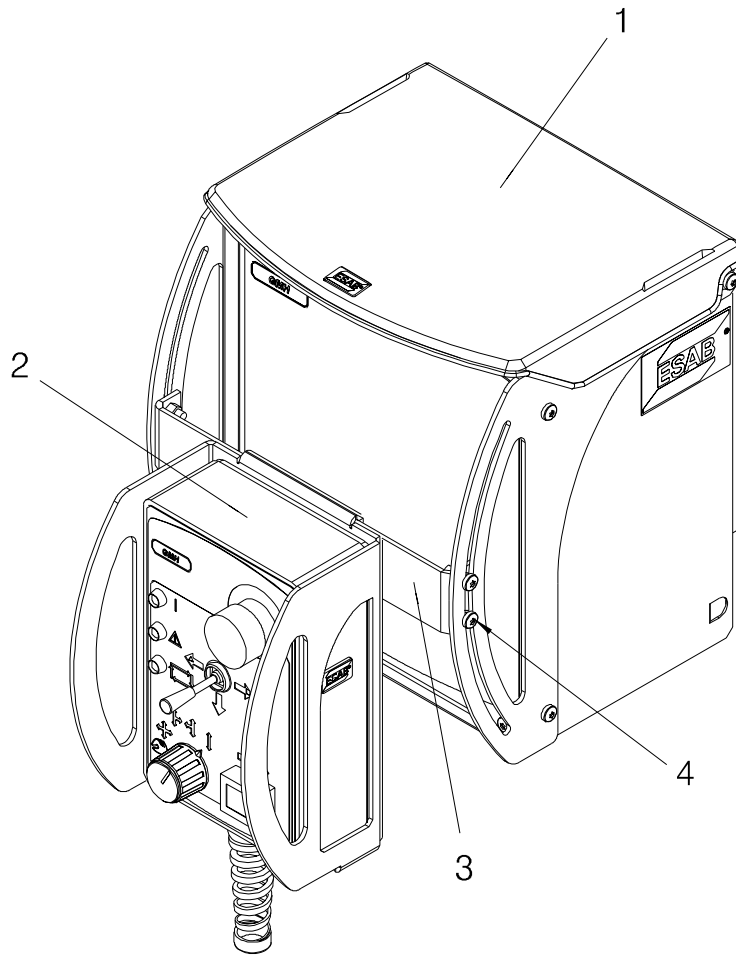




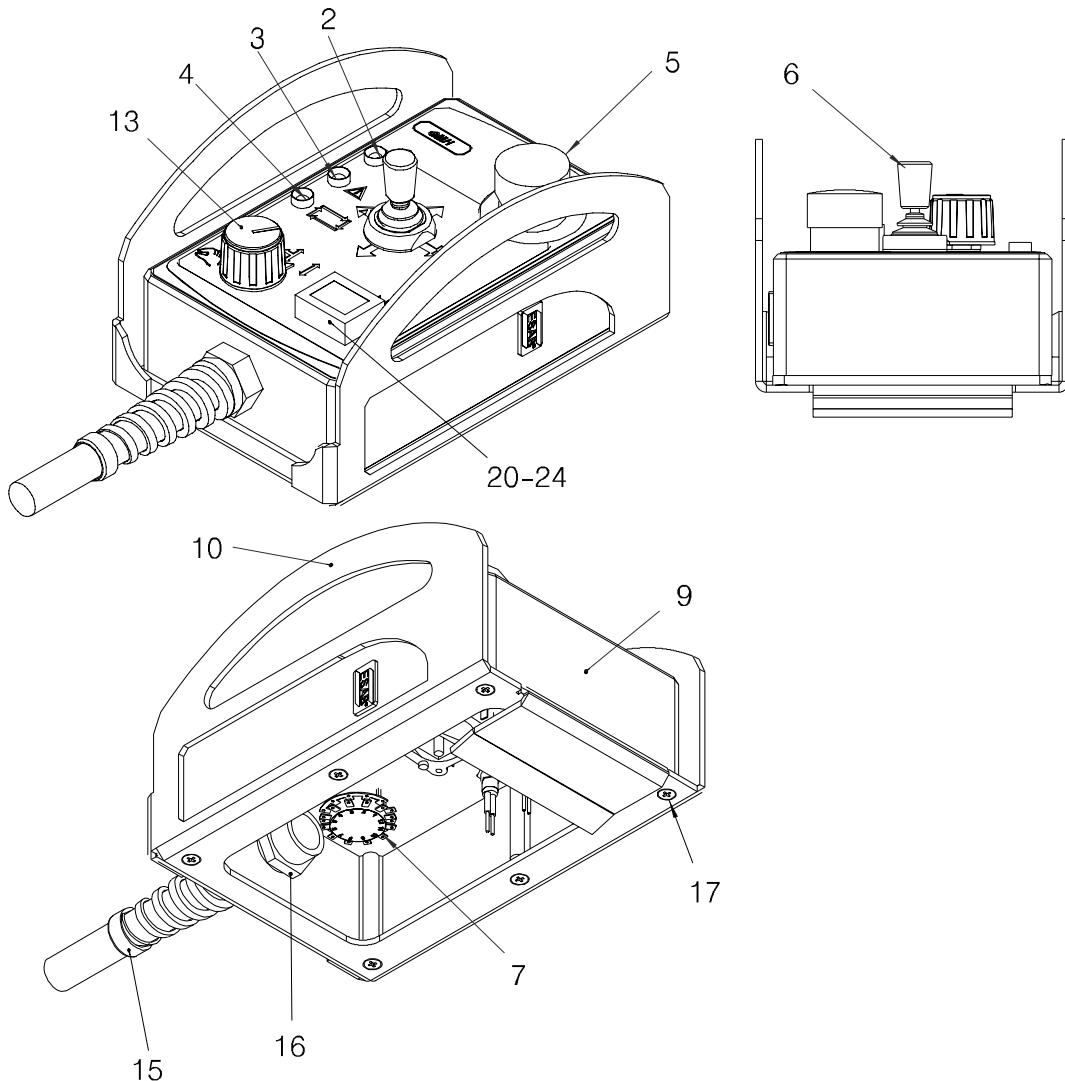
Item no.	Qty	Ordering no.	Denomination	Notes
		<b>0460462882</b>	<b>MMC GMH</b>	<b>GMH</b>
4	1	0194282001	LED (white)	24 V
5	1	0194282002	LED (yellow)	24 V
6	1	0194282003	LED (green)	24 V
7	1	0460600328	Knob, grey with arrow	d28-6mm
			<b>Cable set GMH with MMC</b>	
404	2	0415200020	Contact block 1no+1nc	1no+1nc
405	1	0415200027	Cap orange	18x24
406	1	0415200001	Push-button	18x24
407	1	0415200047	Bulb	14V 80mA
408	1	0415200058	Splash water shield	
409	1	0460424881	Emergency stop	
410	1	0460795001	Joy-stick	
411	1	0192722004	Switch	5 settings



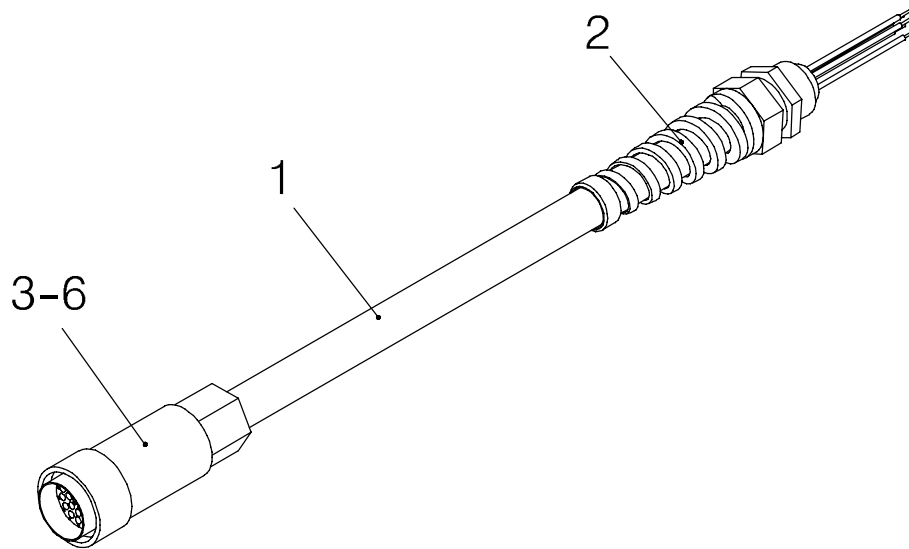
Item no.	Qty	Ordering no.	Denomination	Notes
		<b>0460698880</b>	<b>GMH with portable control box</b>	
1	1	0460503880	GMH without MMC	
2	1	0460570880	Portable control box	
3	1	0460481001	Bracket	
4	4		Screw (Black)	MRT M5x16



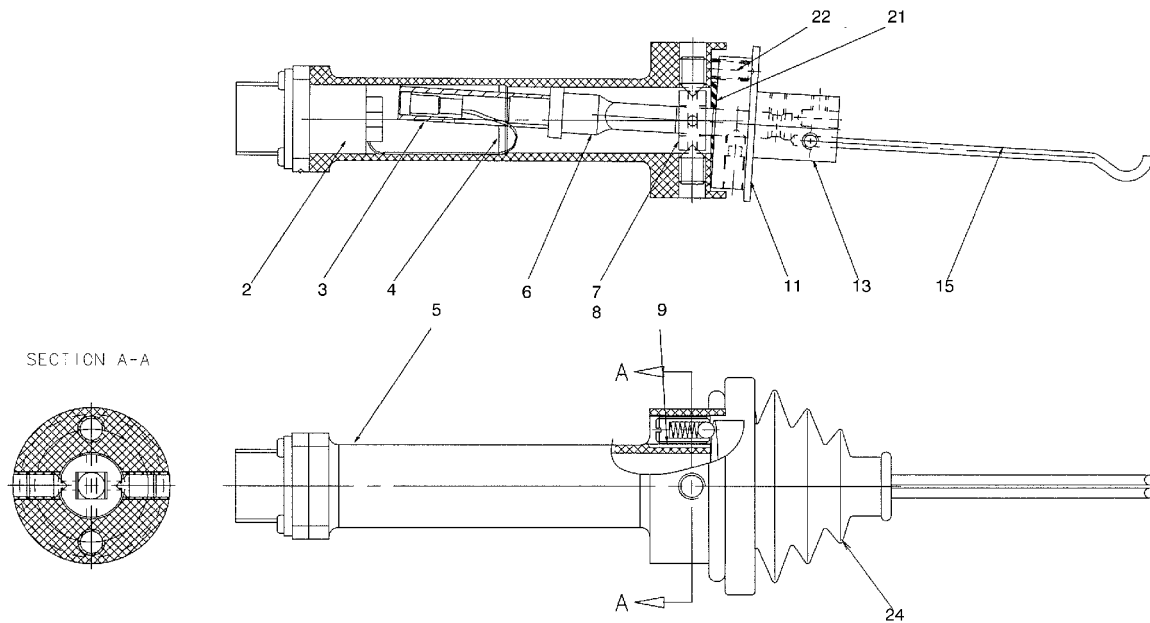
Item no.	Qty	Ordering no.	Denomination	Notes
		<b>0460570880</b>	<b>Portable control box</b>	<b>GMH</b>
2	1	0194282001	LED indicator white	
3	1	0194282002	LED indicator yellow	24 V
4	1	0194282003	LED indicator green	24 V
5	1	0460424881	Emergency stop complete	
6	1	0460795001	Joy-stick	
7	1	0192722004	Switch	5 settings
10	1	0460569001	Cover	
13	1	0460600328	Knob, grey with arrow	d28-6mm
15	1	0460759880	Remote cable	4m
16	1		Nut	pr22,5
17	6		Screw	MFX-PH M4x16
20	1	0415200020	Contact block	1NO+1NC
21	1	0415200027	Cap orange	18x24
22	1	0415200001	Push button	18x24
23	1	0415200048	Bulb	28V 40mA
24	1	0415200058	Splash water shield	



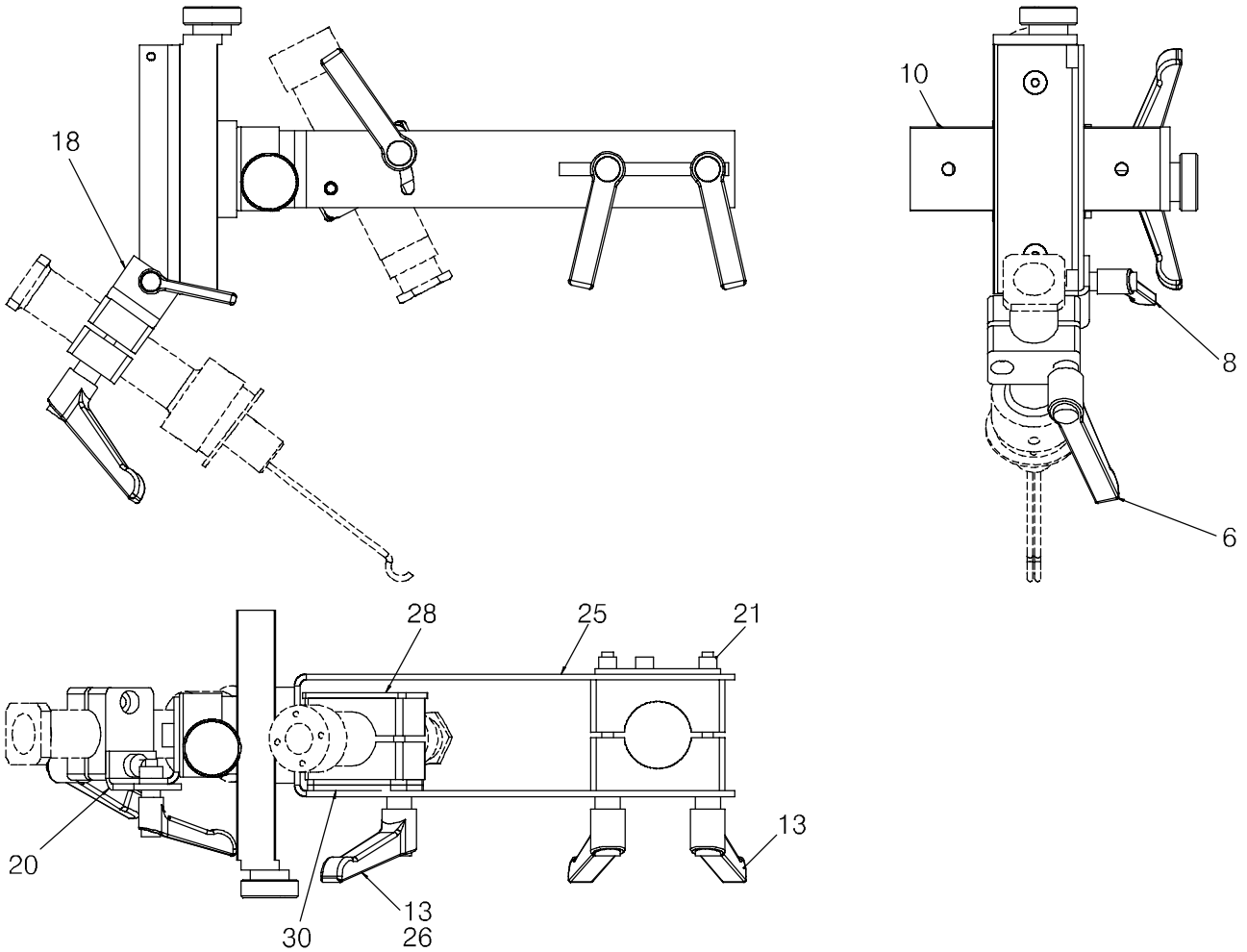
Item no.	Qty	Ordering no.	Denomination	Notes
		<b>0460759880</b>	<b>Remote cable</b>	<b>4m</b>
1	4	0193963002	Cable screened	6x1,5mm2 12x0,5mm2
2	1	0193307105	Cable fitting	stp-b 16
3	1	0194200023	Cable gland with tube	23-pole
4	1	0194182023	Pin plug	23-pole
5	11	0323945001	Connector pin	rm20m-13k
6	6	0323945004	Connector pin	rm16m-23k



Item no.	Qty	Ordering no.	Denomination	Notes
		<b>041668880</b>	<b>Sensor</b>	
2	1	0156106880	Joint tracking sensor	
3	1	0415836880	Diffusor	
4	1	0415739001	Insulation	t 0,125
5	1	0417258880	Sleeve	d45
6	1	0416671001	Guide arm	d18
7	1	0415328001	Yoke	
8	1	0211101049	Pin	d3x18
9	2	0193860109	Pressure pin reinforced	m8x16
11	1	0417958880	Ring with adjustable screw	
13	1	0415329001	Guide arm attachment	
15	2	0146586001	Guide finger	
21	1	0415332002	Seal	
22	1	0418090001	Pressure spring	
24	1	0412013001	Safety bellows	



Item no.	Qty	Ordering no.	Denomination	Notes
		<b>0416739880</b>	<b>Slide cross for sensor</b>	
6	3	0193570120	Locking lever	m6x50x63
8	1	0193570109	Locking lever	m6x16x45
10	2	0433851001	Mini slide	
13	2	0193570150	Locking lever	m6x75
18	1	0417096880	Mounting bracket	
19	1	0417097001	Clamp	
20	1	0417098880	Mounting bracket	
21	1	0417099880	Plate	
22	1	0417097002	Clamp	





# ESAB subsidiaries and representative offices

## Europe

### AUSTRIA

ESAB Ges.m.b.H  
Vienna-Liesing  
Tel: +43 1 888 25 11  
Fax: +43 1 888 25 11 85

### BELGIUM

S.A. ESAB N.V.  
Brussels  
Tel: +32 2 745 11 00  
Fax: +32 2 745 11 28

### THE CZECH REPUBLIC

ESAB VAMBERK s.r.o.  
Vamberk  
Tel: +420 2 819 40 885  
Fax: +420 2 819 40 120

### DENMARK

Aktieselskabet ESAB  
Herlev  
Tel: +45 36 30 01 11  
Fax: +45 36 30 40 03

### FINLAND

ESAB Oy  
Helsinki  
Tel: +358 9 547 761  
Fax: +358 9 547 77 71

### FRANCE

ESAB France S.A.  
Cergy Pontoise  
Tel: +33 1 30 75 55 00  
Fax: +33 1 30 75 55 24

### GERMANY

ESAB GmbH  
Solingen  
Tel: +49 212 298 0  
Fax: +49 212 298 218

### GREAT BRITAIN

ESAB Group (UK) Ltd  
Waltham Cross  
Tel: +44 1992 76 85 15  
Fax: +44 1992 71 58 03

### ESAB Automation Ltd

Andover  
Tel: +44 1264 33 22 33  
Fax: +44 1264 33 20 74

### HUNGARY

ESAB Kft  
Budapest  
Tel: +36 1 20 44 182  
Fax: +36 1 20 44 186

### ITALY

ESAB Saldatura S.p.A.  
Mesero (Mi)  
Tel: +39 02 97 96 81  
Fax: +39 02 97 28 91 81

### THE NETHERLANDS

ESAB Nederland B.V.  
Amersfoort  
Tel: +31 33 422 35 55  
Fax: +31 33 422 35 44

## NORWAY

AS ESAB  
Larvik  
Tel: +47 33 12 10 00  
Fax: +47 33 11 52 03

## POLAND

ESAB Sp.zo.o.  
Katowice  
Tel: +48 32 351 11 00  
Fax: +48 32 351 11 20

## PORTUGAL

ESAB Lda  
Lisbon  
Tel: +351 8 310 960  
Fax: +351 1 859 1277

## SLOVAKIA

ESAB Slovakia s.r.o.  
Bratislava  
Tel: +421 7 44 88 24 26  
Fax: +421 7 44 88 87 41

## SPAIN

ESAB Ibérica S.A.  
Alcalá de Henares (MADRID)  
Tel: +34 91 878 3600  
Fax: +34 91 802 3461

## SWEDEN

ESAB Sverige AB  
Gothenburg  
Tel: +46 31 50 95 00  
Fax: +46 31 50 92 22

### ESAB international AB

Gothenburg  
Tel: +46 31 50 90 00  
Fax: +46 31 50 93 60

## SWITZERLAND

ESAB AG  
Dietikon  
Tel: +41 1 741 25 25  
Fax: +41 1 740 30 55

## North and South America

### ARGENTINA

CONARCO  
Buenos Aires  
Tel: +54 11 4 753 4039  
Fax: +54 11 4 753 6313

### BRAZIL

ESAB S.A.  
Contagem-MG  
Tel: +55 31 2191 4333  
Fax: +55 31 2191 4440

### CANADA

ESAB Group Canada Inc.  
Mississauga, Ontario  
Tel: +1 905 670 02 20  
Fax: +1 905 670 48 79

### MEXICO

ESAB Mexico S.A.  
Monterrey  
Tel: +52 8 350 5959  
Fax: +52 8 350 7554

### USA

ESAB Welding & Cutting Products  
Florence, SC  
Tel: +1 843 669 44 11  
Fax: +1 843 664 57 48

## Asia/Pacific

### CHINA

Shanghai ESAB A/P  
Shanghai  
Tel: +86 21 2326 3000  
Fax: +86 21 6566 6622

### INDIA

ESAB India Ltd  
Calcutta  
Tel: +91 33 478 45 17  
Fax: +91 33 468 18 80

### INDONESIA

P.T. ESABindo Pratama  
Jakarta  
Tel: +62 21 460 0188  
Fax: +62 21 461 2929

### JAPAN

ESAB Japan  
Tokyo  
Tel: +81 45 670 7073  
Fax: +81 45 670 7001

### MALAYSIA

ESAB (Malaysia) Snd Bhd  
USJ  
Tel: +603 8023 7835  
Fax: +603 8023 0225

### SINGAPORE

ESAB Asia/Pacific Pte Ltd  
Singapore  
Tel: +65 6861 43 22  
Fax: +65 6861 31 95

### SOUTH KOREA

ESAB SeAH Corporation  
Kyungnam  
Tel: +82 55 269 8170  
Fax: +82 55 289 8864

### UNITED ARAB EMIRATES

ESAB Middle East FZE  
Dubai  
Tel: +971 4 887 21 11  
Fax: +971 4 887 22 63

## Representative offices

### BULGARIA

ESAB Representative Office  
Sofia  
Tel/Fax: +359 2 974 42 88

### EGYPT

ESAB Egypt  
Dokki-Cairo  
Tel: +20 2 390 96 69  
Fax: +20 2 393 32 13

### ROMANIA

ESAB Representative Office  
Bucharest  
Tel/Fax: +40 1 322 36 74

### RUSSIA

LLC ESAB  
Moscow  
Tel: +7 095 543 9281  
Fax: +7 095 543 9280

### LLC ESAB

St Petersburg  
Tel: +7 812 336 7080  
Fax: +7 812 336 7060

## Distributors

*For addresses and phone numbers to our distributors in other countries, please visit our home page*

[www.esab.com](http://www.esab.com)



ESAB AB  
SE-695 81 LAXÅ  
SWEDEN  
Phone +46 584 81 000



[www.esab.com](http://www.esab.com)